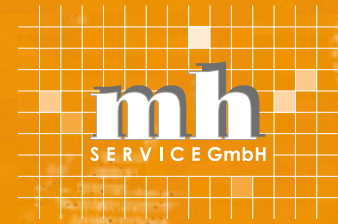


V

# VEHICLE CONSTRUCTION





*An investment  
in knowledge  
pays the best  
interest.*

*Benjamin Franklin*



## THE GOLD STANDARD - MADE IN GERMANY

**We deliver vehicle solutions as per customer requirements** - available as semi-stationary cubes that can easily be put on a truck and as fully-mobile laboratories on a truck or van basis suitable for the requirements of any application. Our vehicles can be used as a mobile command centre, for IT operations, for disaster recovery & crisis management, as a data centre, as forensics lab vehicles, for cyber forensics investigation and as security vehicles.

**Our fully mobile and fully independent mobile laboratories are developed to efficiently collect and analyse large datasets or samples directly and immediately on site.**

**And thanks to our know-how it is not possible to access the IT-infrastructure from the outside world. All the data on the IT-hardware in our vehicles will be kept secure, kept secret! Moreover, our vehicle solutions are optimised for a completely autonomous operation, even in difficult environments like undercover investigations, warzones and disaster areas.**

# BEST MH QUALITY



## MADE IN GERMANY



## DELIVERY VAN CLASS

---

### DIMENSIONS:

---

Weight:	3,5 up to 5,5 tons
Length:	5,5 metres up to 7,5 metres
Height:	2,8 metres up to 3,5 metres

### INTERIOR:

---

Size:	2 up to 6 square metres
Workplaces:	1 up to 5 workspaces with workstations
Server:	up to 2 Swing racks with a height of up to 36 U
Toilet:	possible
Kitchenette:	possible
Beds:	-

### EXTERIOR:

---

Covert:	covert version possible
Antennas:	hidden - mounted under the spoiler
Slide outs:	no

### TECHNICAL SPECS:

---

AC:	silent generator possible
Self-sufficient:	up to 5 days

## PALADIN CLASS

---

### DIMENSIONS:

---

Weight:	7 up to 24 tons
Length:	8 metres up to 12,5 metres
Height:	3,5 metres up to 4,5 metres

### INTERIOR:

---

Size:	10 up to 40 square metres
Workplaces:	4 to 16 workspaces with workstations
Server:	up to 6 Swing racks with a height of up to 40 U
Toilet:	possible
Kitchenette:	possible
Beds:	possible

### EXTERIOR:

---

Covert:	covert version possible
Antennas:	hidden - mounted on the roof
Slide outs:	possible

### TECHNICAL SPECS:

---

AC:	2x silent generator possible
Self-sufficient:	up to 14 days

## CUBE CLASS

---

### DIMENSIONS:

---

Weight:	5 up to 8 tons
Length:	5,5 metres up to 7,5 metres
Height:	2,8 metres up to 3,5 metres
Transport:	Roll on - roll off container truck

### INTERIOR:

---

Size:	2 up to 6 square metres
Workplaces:	1 to 5 workspaces with workstations
Server:	up to 6 Swing racks with a height of up to 36 U
Toilet:	possible
Kitchenette:	possible
Beds:	-

### EXTERIOR:

---

Covert:	covert version possible
Antennas:	hidden - mounted under the roof spoiler
Slide outs:	possible

### TECHNICAL SPECS:

---

AC:	silent generator possible
Self-sufficient:	up to 6 days

## TRAILER CLASS

---

### DIMENSIONS:

---

Weight:	11 up to 40 tons
Length:	9 metres up to 13 metres
Height:	3,5 metres up to 4,5 metres

### INTERIOR:

---

Size:	16 up to 50 square metres
Workplaces:	4 to 16 workspaces with workstations
Server:	up to 6 Swing racks with a height of up to 40 U
Toilet:	possible
Kitchenette:	possible
Beds:	possible

### EXTERIOR:

---

Covert:	covert version possible
Antennas:	hidden - mounted on the roof
Slide outs:	possible

### TECHNICAL SPECS:

---

AC:	3x silent generator possible
Self-sufficient:	up to 14 days





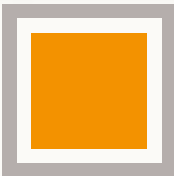
# CRISIS MANAGEMENT

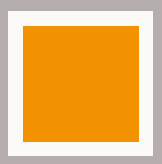
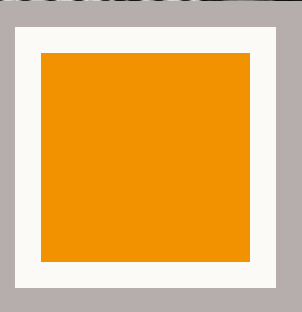
## IN ORDER TO HANDLE LARGE-SCALE DISASTERS

and improve the organisation of the parties involved, the presence of a physical resource distribution hub, to moderate the flow of information into one shared operational picture, is advisable. This is why an emergency, disaster, or mobile command centre is an indispensable part of any big operation.

The mobile control room is divided into several departments - with several workstations, a conference room, telephone, radio, audio / video equipment and toilets all integrated into the vehicle. Due to factors often beyond our control, redundant voice and data communications and all IT and radio equipment will be adapted to suit these circumstances. The arrangement of labour and equipment is important in managing situations crucial to operations of this scale. For this reason, we have optimised the air-conditioning, which is separated for the server room and the office, and we have made sure the working environment is ergonomically designed just like a real office.

Our mobile control units and vehicles serve as quickly deployable solutions in emergencies, such as terrorist attacks, demonstrations, fires, natural disasters and other such possibly critical events.





# COVERT

---

## COMMAND HUB

### SOME CASES REQUIRE AGENTS

to investigate undercover, taking care a suspect is unaware they are being observed. Hence, the mobile command centre for the collection and analysis of evidence must not be identifiable or stand out in any way. Our covert command hub vehicle is ideal for these situations. It can be outfitted as a command centre, for crisis management, surveillance rooms, or as an IT-forensic laboratory, with concealed spaces for door openings, camera and video installations, allowing you to discretely and quickly analyse collected material unnoticed on site.

Due to our long background in IT-security, we make sure the IT equipment is shielded and no one can access from the outside world - as in all of our vehicle solutions. Your information stays secret!















# IT - FORENSIC INVESTIGATION



## IN AN ERA OF FAST GROWING AMOUNTS OF DATA

the acquisition of evidence is a critical point regarding forensic data collection. Our laboratory vehicles are developed to efficiently collect and analyse large datasets directly and immediately on site. Our mobile laboratories make it possible, for example, to infiltrate companies suspected of economic fraud and generate complete documentation in short periods of time. In case of suspicion, you can now bring your fully independent and complete mobile computer lab directly to the crime scene and simply image and analyse just as you do back at the HQ!

All of our vehicles and containers are developed like a kind of mobile forensics tool-kit, so you will always have the acquisition hardware, analysing software and workstations on board to find, collect, save and analyse the evidence. IT-forensics, intrusion detection, eDiscovery and data recovery can all be professionally applied even in difficult environments, like undercover investigations or areas of conflict.

With the correct trained staff, even on-site data recovery is possible using solutions from for example Acelabs and TeelTech.









CSI

## CRIME SCENE INVESTIGATION

### VEHICLE DEVELOPED FOR CRIME SCENE INVESTIGATORS

help solve cases faster. Fact.

Crime scene investigators need to arrive at the crime scene with the proper equipment – tools like photographic equipment, fingerprint equipment, blood collection, cutting tools, flashlights etc. as well as bigger items like extra lighting sources, tents or privacy shields. Our specially designed CSI vehicles ensure that – especially for longer investigations on major crimes that last for days or even weeks – your evidence and equipment is protected from external influences like extreme temperatures or vibrations through bumpy roads and through planned out segmentation, everything stays organised to make your work easier.

Performing tasks like creating file reports, sending data and processing evidence right at the crime scene saves much time. You are able to work comfortably inside our vehicles and experience shows us that having the right temperature to work in helps you stay concentrated for longer. Because we design our laboratories to meet the individual needs of our customers, each one will be different. However, all of them have their own sophisticated power supply systems, ergonomic work places, sound and temperature insulation, specially developed air conditioning systems and a server swing rack.





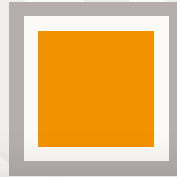








# BIOLOGICAL / CHEMICAL LABORATORY



## OUR MOBILE LABORATORIES CAN BE USED

as a medical, biological or chemical facility. Mobile solutions help people on the ground, whether through disease testing stations or easy dental care in a mobile surgery. We can also supply cleanroom, vacuum and pressurised laboratories, depending on your requirement. High quality ABC air filtration systems are used so that the exchange of air molecules for oxygen and nitrogen are controlled. Our vacuum systems ensure that substances remain inside the vehicle, important in disease detection vehicles for example. In pressurised cabins we achieve exactly the opposite, achieving virtually any clean room classification. Access to the laboratory is through a sophisticated door seals. This gives our mobile cleanrooms the same level of operation as those in the laboratory with an independent ventilation system. Another application for our vehicles is petro-analytics. We use an off-road vehicle with four-wheel drive to safely get you where the petrol and chemical sampling work must be carried out, even with the most difficult terrain, allowing you to make decisions quickly in the field.

These solutions are fully self-sufficient, have their own power and water supplies, air conditioning and the necessary communication equipment.







# BACK - UP

---

## DATA CENTRE

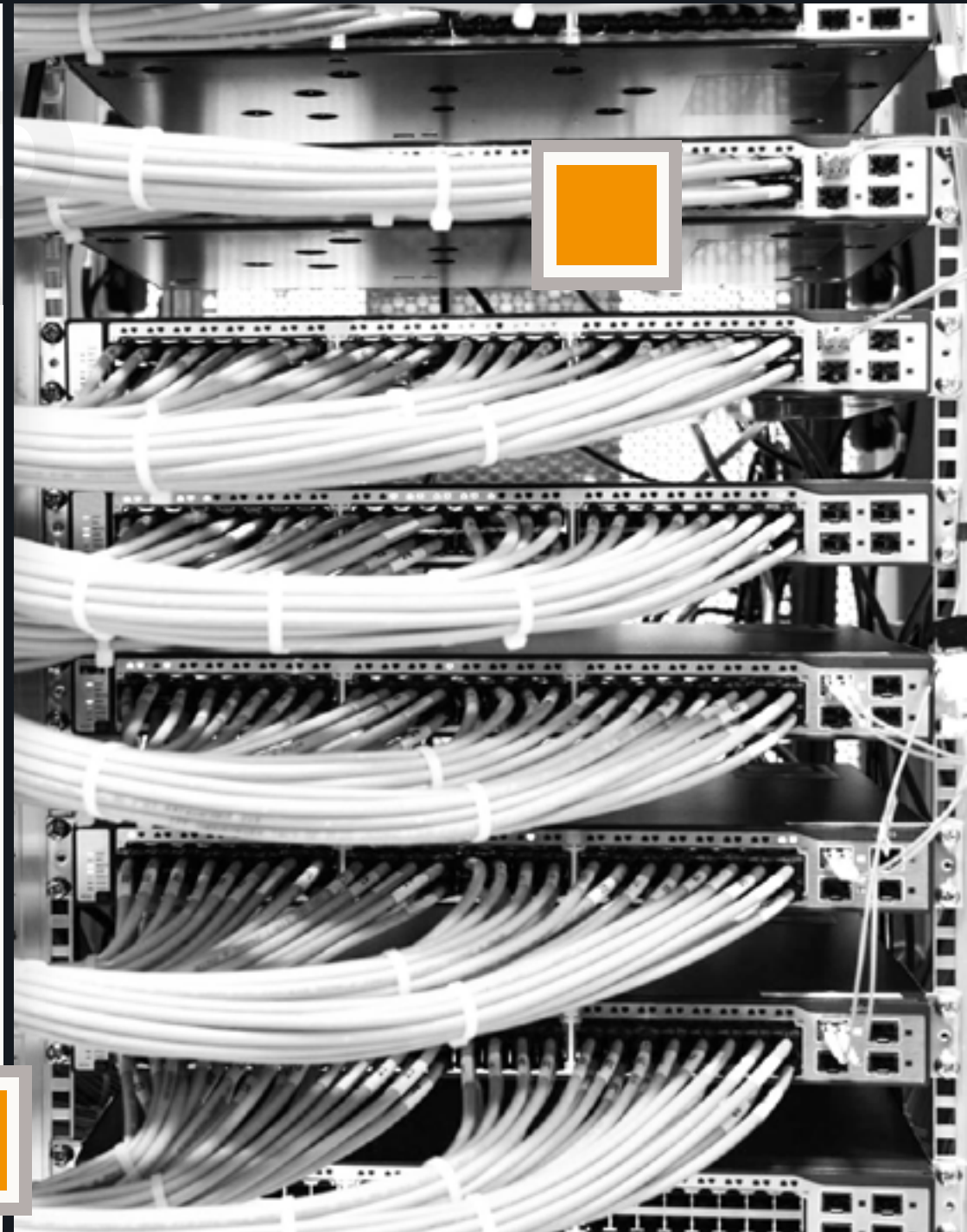
### IN A FAST CHANGING IT WORLD

with continually growing amounts of data, quick and efficient solutions are required.

For an increase in your server capacities, our container solutions are more than capable of keeping up. These are available in a mobile semi-trailer version or as a roll off high-end container. We offer standard containers of 20 and 40 foot in length. They are either stationary, semi-stationary or drop-off and offer a very efficient way to increase your computing power or data capacity in the short term. As IT specialists we are, using our 25-year experience, able to supply solutions that can be used as quickly transportable backup centres – suitable for all manner of emergency and disaster situations, such as fires, floods or cyber-attacks. These centres are built according to the latest IT standards using flexible power and cooling concepts.

All the sub-systems, such as power distribution, racks, battery, cooling and so on, are well integrated.

Using quality components only, it possible to use our data centres also in the long term – even in extreme conditions like desert areas or freezing cold places – this has been tried and tested many times over by our happy customers and clients the world over.









## AIR CONDITIONING



Thanks to the special construction of our vehicles, the air conditioning works even in extreme climate conditions, like hot desert regions.

By using innovative ventilation systems and powerful generators, we can make sure that there is always a constant and comfortable temperature.

## POWER SUPPLY



Not only the operation of the different IT-systems during investigations, or simple office components like lightning, but also the air conditioning can consume much power depending on the conditions. The vehicle's motor is too loud to keep running and pollutes the environment due to its poor efficiency. For this reason we have implemented a controllable mix of more than one power source in our vehicles.

If an external power supply is possible on site then you can power the vehicle with high voltage current externally. When this is not possible then up to two integrated power generators with optimised efficiency can be used as a reliable power supply. Thanks to a specially developed sound insulation, there is no noise pollution inside the cabin and the sound of the generators is not noticeable.







## EXTENSIONS



With up to 40m<sup>2</sup> our mobile laboratories offer enough space for the most diverse working scenarios, including mobile forensics or the opening of magnetic media in a 'clean room environment' for data recovery.

Made possible thanks to our slide-out systems, which allow you to move the walls of the vehicle outwards expanding the lab size – up to an extra 2m<sup>2</sup>. This system is fully automated and takes just minutes with the touch of a button.



## INTERIOR



Studies show that productivity suffers in poorly designed working conditions. In order to prevent such reduction in energy, we work closely with car interior designers to adapt each vehicle to the different specifications, regularly taking into account the latest studies on the topic of workplaces. The whole interior is designed in close collaboration with our customers and realised by our skilled craftsmen from our vehicle construction department. Intelligent room concepts make sure that the working area is open and spacious, thus insuring comfort on longer operations.

## SWING RACK

---



Ingenious engineering, world wide unique concepts and a specially developed server rack allow the integration of highly sensitive IT-systems into a vehicle that is continuously exposed to vibrations and shocks. Our unique suspension system ensures that there is no damage to the special electronic components whilst on the move!

## SOUND INSULATION

---



The insulation panels have a minimum thickness of 32 mm up to 80 mm and are made from a glass fibre reinforced plastic foam material. This ensures a very good noise insulation. The window design is also specially adapted for high sound insulation requirements and has already been tested in the field. A welcome side effect of the sound insulation is also improved thermal insulation. The sound insulation effect of a wall of 50 mm thickness is comparable to the insulation effect of 300 mm brickwork.

## WORKPLACES

---



The workplaces are adapted to your suit your needs. We have considered the results of several studies dealing with ergonomic furnishing in the workplace and thanks to individual configuration up to 16 workplaces are possible. For long-time operations, we can integrate sleeping sections and bathrooms if needed. This ensures that your team are able to work comfortably, and completely self-sufficiently, for longer periods.



## QUALITY

---

# BEST MH QUALITY



MADE IN GERMANY

'Made in Germany' is a worldwide accepted quality standard that we stand by. We think purchasing a vehicle should be a long-lasting one-time investment. Our vehicles are enhanced constantly with the use of the latest technological advances, applied with 25 years of experience building high-end computer hardware and more than 10 years working with specialist vehicles. Feedback from our customers is well received and used in the development processes of our new vehicles. We can offer a range of fully configured up-to-date systems, customised to fit your individual needs.

## SUMMARY

---

These features and concerns are what distinguishes the mh Services vehicles from all other vehicles.

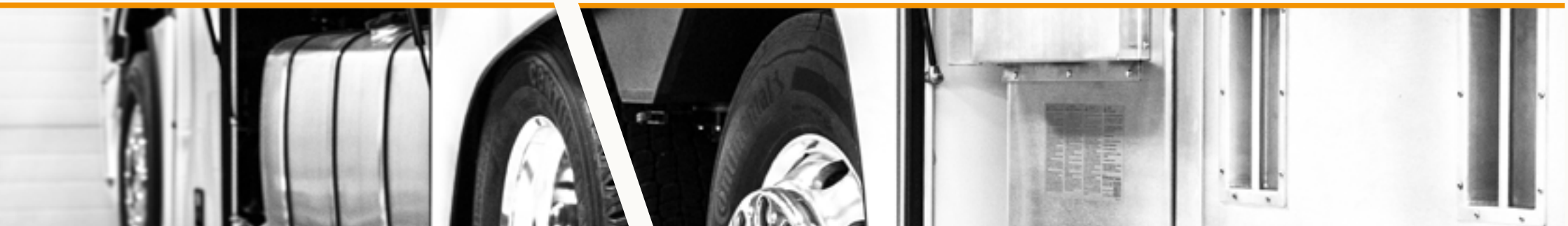
Our specially developed vehicles are like an ambulance, a repair van and a TV broadcast vehicle all in one. However, on closer inspection the professional superiority and craftsmanship of our unique mobile labs becomes clear. Data centre and back-up vehicles are generally not self-sufficient or able to function independently. Broadcast trucks are not designed for standard server technology; they do not provide adequate impact resistance and cooling with their performance. Since this is not about the transport of switched-off equipment, but more the capability to be quickly operational at the crime scene to help conduct your investigations, we believe there is no other vehicle concept worldwide to match ours. Our solution has been tested and is ready for work the moment it leaves our factory. It helps get the most out of your on-site work whilst remaining flexible and ready for action at all times. They have been designed with sophistication and energy with a care for detail, such as with the correct climate concept, special vibration protection systems ensuring absolute data integrity for sensitive laboratory components! With proper maintenance, a „normal“ service life of 25 years can be expected.

As a specialist company, we have set global standards with our equipment and solutions. This is possible due to our flexibility in response to customers' individual requirements and needs. We supply our solutions worldwide to national security authorities, armies, the police and big concerns alike.

We support our customers even after the purchase on site with the full spectrum of spare parts and services from all manufacturers.

For further information, we would be happy to take your call.





mh Service GmbH  
Barthelsmuehling 24  
76870 Kandel  
Deutschland

Germany:  
Tel.: +49 (0) 7275 40444-0  
E-Mail: [info@mh-service.com](mailto:info@mh-service.com)

UAE:  
Tel.: +971 (0) 508471187  
E-Mail: [info@mh-service.ae](mailto:info@mh-service.ae)